



# Instruction manual – AQUALINING SET



13 Connect fixing screw and slackline with shackle



14 Connected side Clamping range



15 Establish same connection on the other side



16 Connected side Line range



17 Connect slackline with ratchet



18 Connect slackline with ratchet



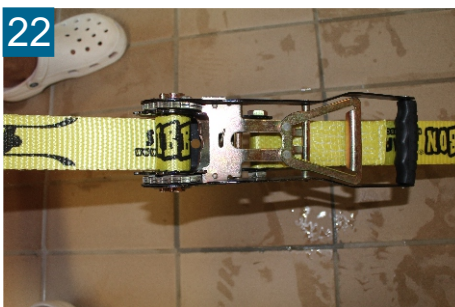
19 Look out for even alignment of abrasion protection



20 Tighten by tension and use ratchet (3 turns) before line grips



21 Adjust slackline manually Important: secure ratchet!



22 Secured ratchet

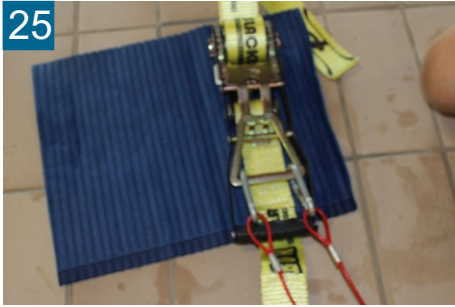


23 Safety rope

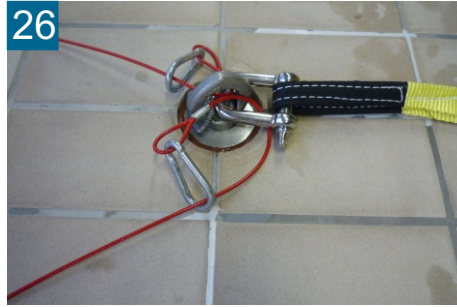


24 Put safety rope in the mount

# Instruction manual – AQUALINING SET



Fix safety rope at ratchet



Fix safety rope at shackle on the other side



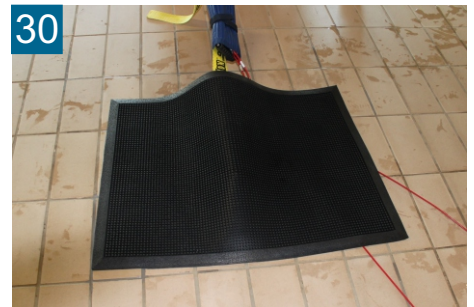
Ratchet cover



Place ratchet cover around ratchet



Fix ratchet cover with velcro fastener



Place protection mat on both sides



Enjoy Aqualining!

# Manual AQUALINING SET

1. Assembly, dismantling and installation only by certified experts
2. Monitoring of use
3. Just one person is authorized to use slackline
4. Jumping or swimming is not allowed next to the slackline within a distance of 4 metres to the left and the right
5. Avoid descending and walking backwards at the edge of the pool
6. Use is not allowed without protection elements
7. Before storage dry wet pieces, especially the slackline
8. Use of another slackline such as brand Gibbon from ID Sports is not allowed
9. The DIN 79400 must be observed. These standards are generally binding for all natatoriums.

**SlacklinerPRO**  
Roland Haas 

Roland Haas

Slacklinesysteme  
für Schwimmbecken  
und Außenanlagen

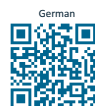
Raiffeisenstraße 3  
97274 Leinach

0176 - 32771505  
info@slacklinerpro.de  
www.aqualining.de



## Aqualining-Set

Montagevorrichtung zum Befestigen einer Slackline über Schwimmbecken  
Nationales und internationales Patent und Gebrauchsmuster



Mounting device for fixing a Slackline across a pool  
National and international patent and utility model



◆ Made in Bavaria ◆