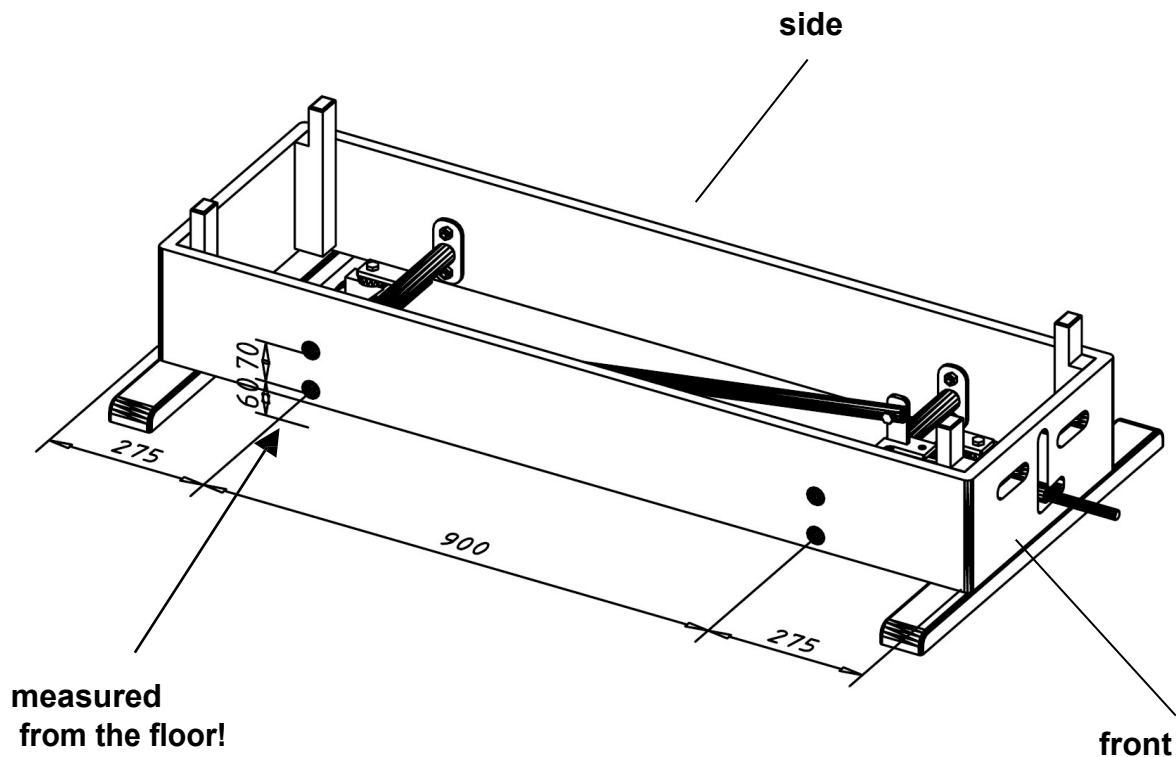


Assembly instructions for the swivel castor kit

Thank you very much for choosing a **Sport-Thieme** product. Please read the instructions fully before you assemble the equipment so you can enjoy the product and its guaranteed safety:



III. 1: assembly measurements

Included:

Pos.	Description
1	front set of castors with telescopic lever
2	rear set of castors without telescopic lever
3	adjustable connecting tube
4	4 x axle bearing
5	8 x coach bolt M8 with locking nut
6	2 x hex bolt M8 with locking nut

Tools required:

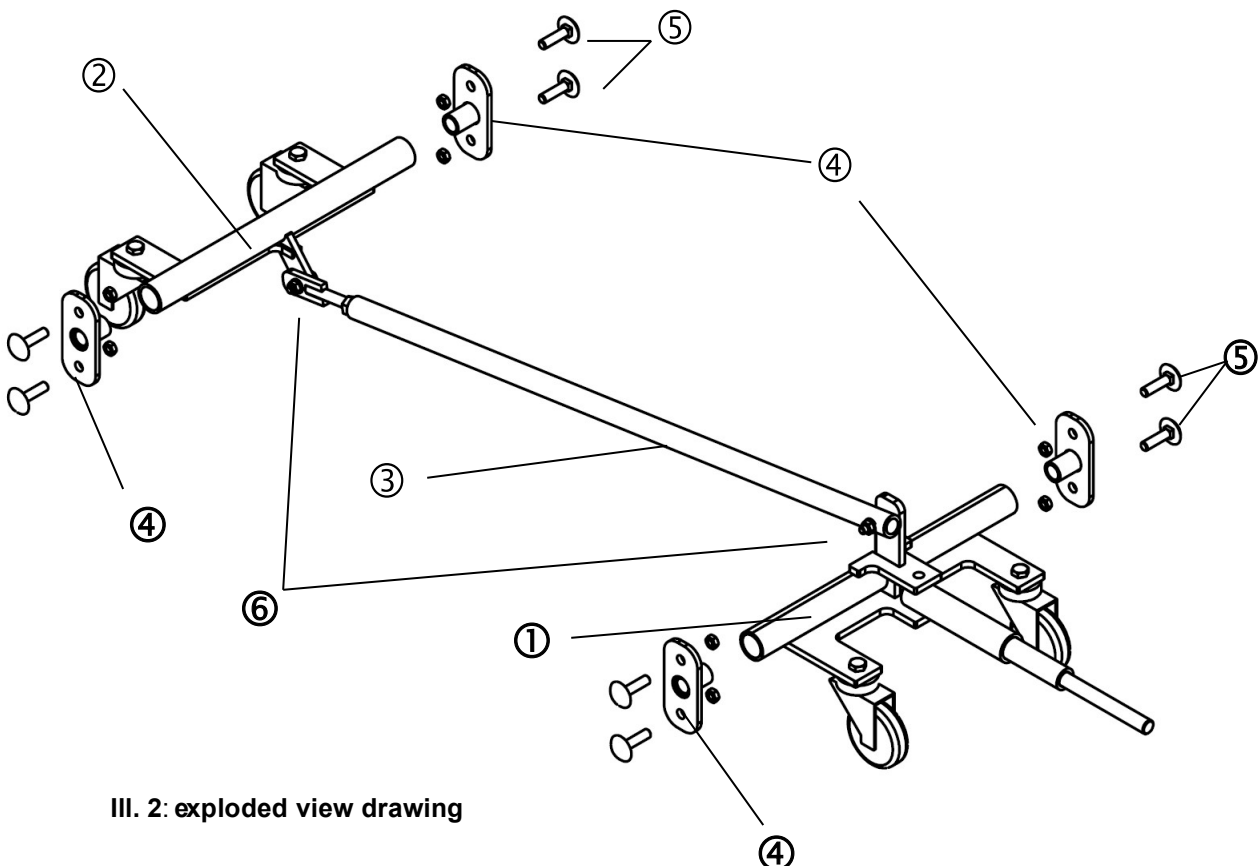
2 spanners	13 mm	
1 wood drill bit	∅ 8.0 mm	*
1 jigsaw		*

Prod. code: 121 7302 and 121 7344

Order of assembly

1. *If the box is not already prepared, mark 8 holes on the side of the box's bottom section as shown and drill.
2. *After that, the cut-out in the front is marked as shown in illustration 3.
3. Insert the axle bearings④ into the tube ends of the two sets of castors① and ② .
4. Place the sets of castors① and ② together with the axle bearings④ into the box's bottom section. Insert the telescopic lever into the respective cut-out.
5. Using the 8 coach bolts⑤ bolt the sets of castors① and ② to the box section.
6. Bolt the adjustable connecting tube③ using hex bolts and locking nuts⑥ to the top of the set of castors① .
7. Turn the threaded part of the connecting tube③ by so much that, when the telescopic lever is engaged, the castors lift the vaulting box safely and the box can be moved.
8. Bolt the connecting tube③ to the set of castors② using hex bolts⑥ and locking nuts.

* For vaulting boxes without assembly cut-outs.



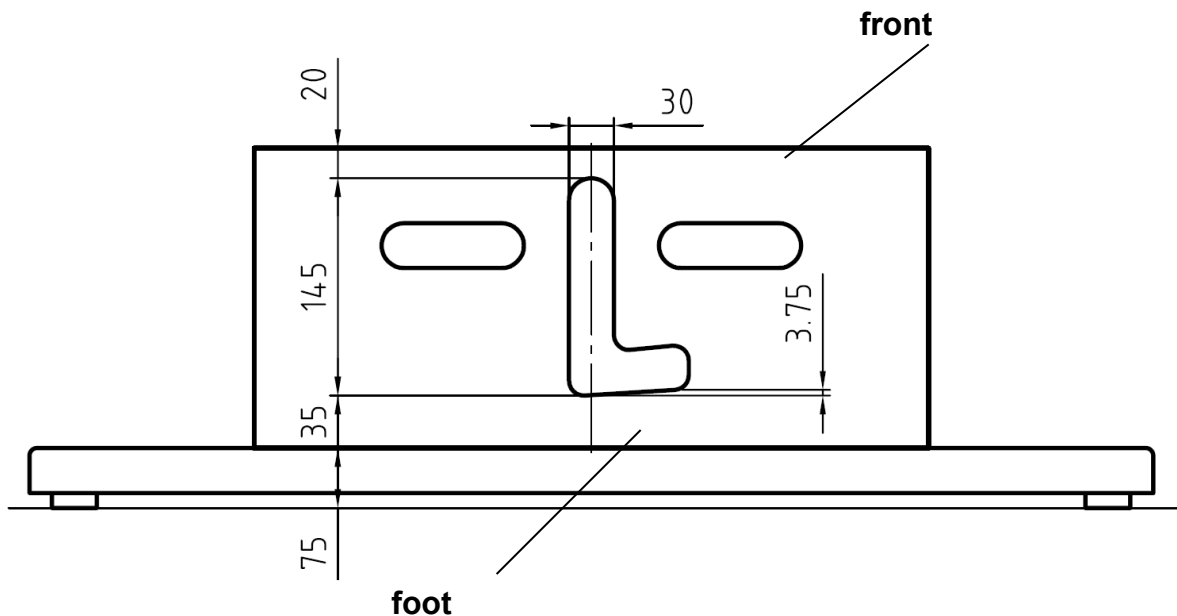
III. 2: exploded view drawing

Prod. code: 121 7302 and 121 7344

Note:

Drilling into the side

- The holes may be too close to the side's bottom edge on vaulting boxes with a higher foot height.
- If this is the case, please do not drill the holes above each other but horizontally next to each other.
- The centre between the holes remains in the same place.
- Turn the axle bearing④ by 90° and install it.



III. 3: dimensions cut-out

Special features of the safety swivel castor kit 121 7344

The safety swivel castor kit is patented and makes the transport of vaulting boxes safer. It should prevent children from riding on the vaulting boxes during transport. In addition, correct setting prevents overloading the castors and damage to the floor. A spring mechanism prevents moving the complete vaulting box. The spring gives when overloaded (see ill. 7) and the vaulting box stands on its rubber feet despite the engaged operating lever.

The assembly dimensions are the same for both versions.

Setting the spring preload

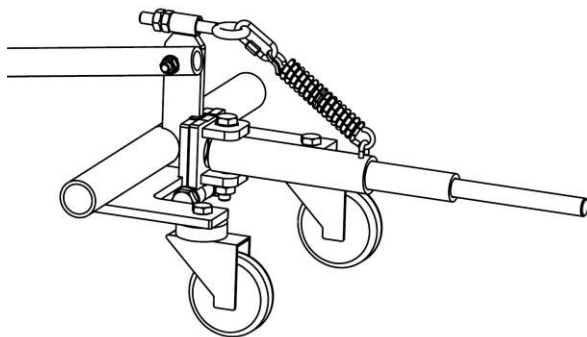
1. Set the preload by turning the nuts (see ill. 7).
2. Load the entire vaulting box in steps with up to 15 - 20 kg additional weights e.g. medicine balls, dumbbells or weight discs.
3. Check if the swivel castor kit releases and that the vaulting box stands safely on the rubber feet.

Prod. code: 121 7302 and 121 7344

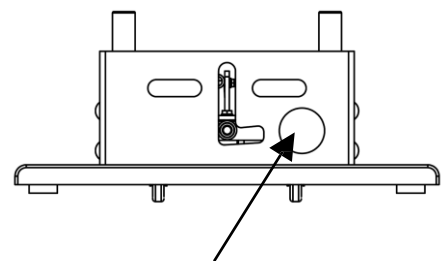
4. Repeat the process until there is a safe release at approximately 90 kg.
5. Finally, please counter the spring adjustment device's nuts to keep the preload.
6. Check the release mechanism during every use and adjust the spring if required.

The **red warning sticker** must be attached so that is clearly visible on the side of the box's bottom section, where the operating lever is located (see ill. 5)

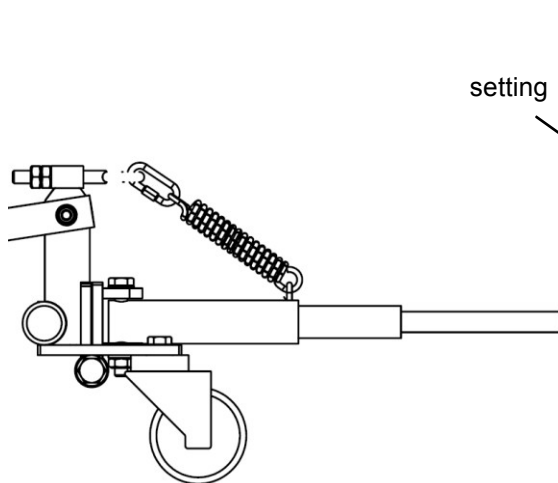
Warning! A wrongly adjusted swivel castor kit can cause accidents and severe damage to the floor.



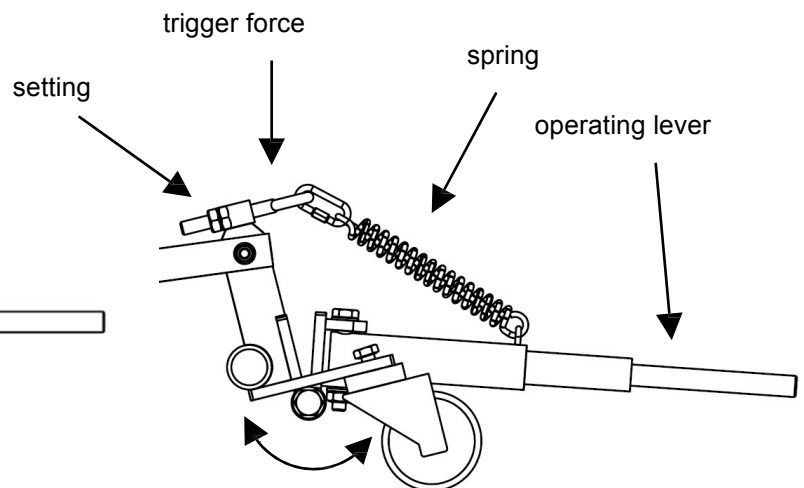
III. 4: overview swivel castor kit



III. 5: sticker



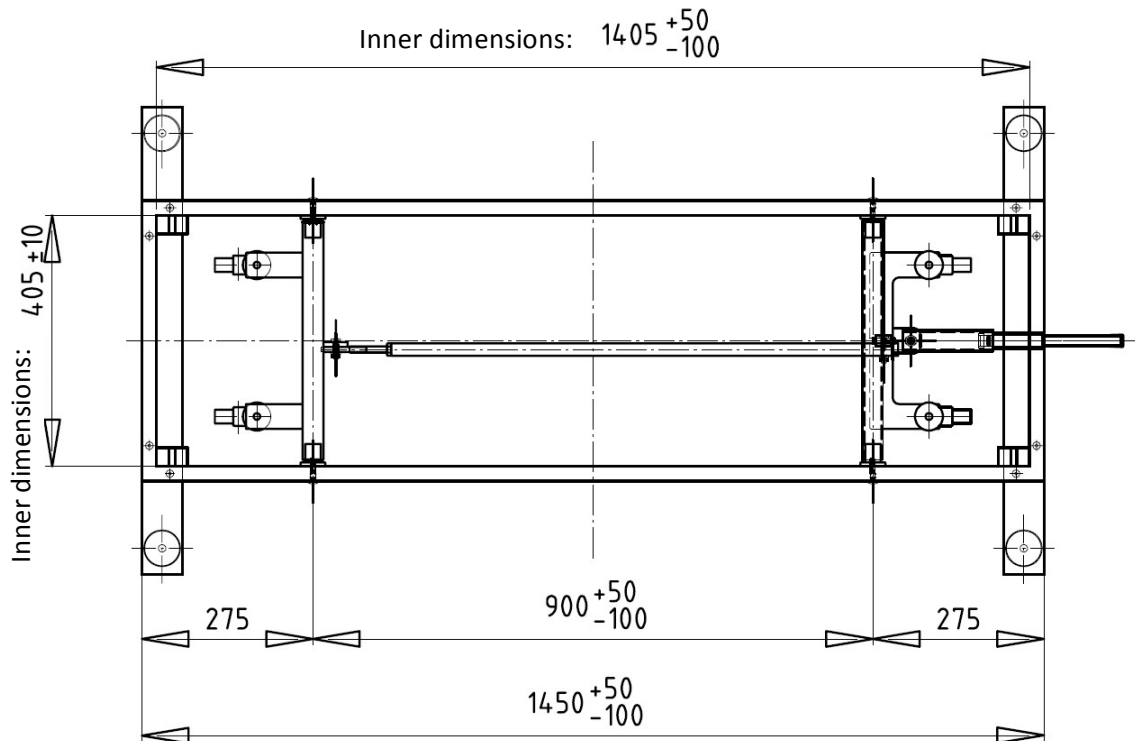
III. 6: swivel castor kit operating setting



III. 7: activated swivel castor kit

Prod. code: 121 7302 and 121 7344

The swivel castor kit can be used for the following vaulting box dimensions (inner dimensions are relevant):



Caution: Do not overload the equipment!



Maintenance and care instructions

Instructions:

Carry out a visual check at regular intervals. Due to our continuous quality control of the products, technical changes may occur which may lead to slight deviations in the instructions. Check at regular intervals that the screw connections are tight. Check the equipment for possible damage and replace worn-out parts. Check the condition of wooden elements as chipping and other signs of wear can result from use. Ensure that moveable parts are free-moving.

We are happy to answer any questions you may have.

Your **Sport-Thieme** Team